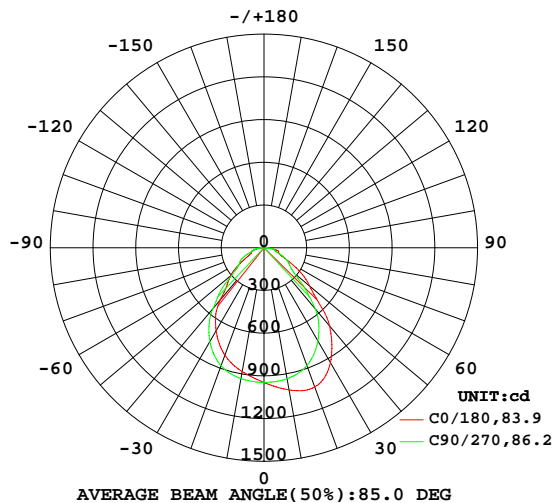


LUMINAIRE PHOTOMETRIC TEST REPORT

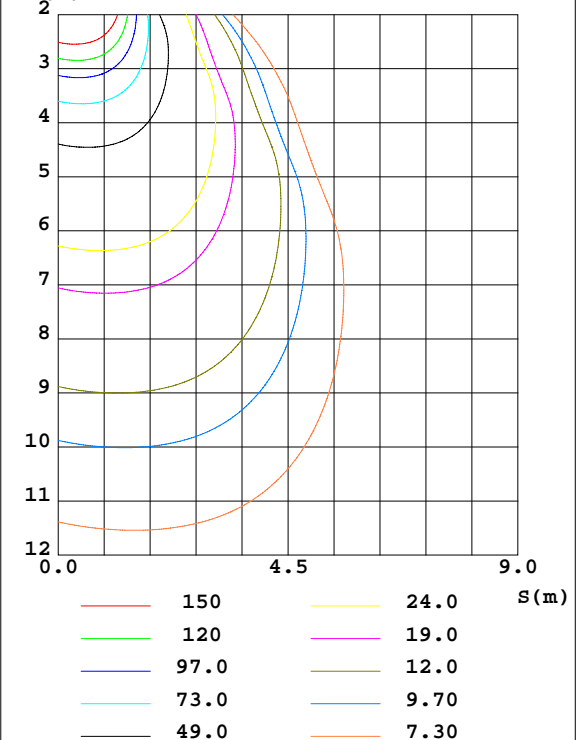
Test:U:229.71V I:0.1760A P:39.270W PF:0.9715 Freq:49.99Hz Lamp Flux:2012.44x1 lm		
NAME:	TYPE:	WEIGHT:
SPEC.:	DIM.: 600*203*10	SERIAL No.:
MFR.:	SUR.:0.58*0.122	Shielding Angle:

DATA OF LAMP		PHOTOMETRIC DATA Eff: 51.25 lm/W			
MODEL		Imax(cd)	1044	S/MH(C0/180)	1.09
NOMINAL POWER(W)	40	LOR(%)	100.0	S/MH(C90/270)	1.20
RATED VOLTAGE(V)	230.0	TOTAL FLUX(lm)	2012.4	η UP,DN(C0-180)	0.0,53.8
NOMINAL FLUX(lm)	2012.44	CIE CLASS	DIRECT	η UP,DN(C180-360)	0.0,46.2
LAMPS INSIDE	1	η up(%)	0.0	CIBSE SHR NOM	1.25
TEST VOLTAGE(V)	230.0	η down(%)	100.0	CIBSE SHR MAX	1.25

LUMINOUS INTENSITY DISTRIBUTION DIAGRAM



C0 PLANE ISOLUX DIAGRAM (UNIT:lx)



C Range: 0 - 360DEG
C Interval: 90.0DEG
Test Speed: HIGH
Temperature:25.3DEG
Operators:
Test Date:2026-01-17

γ Range: 0 - 90DEG
 γ Interval: 1.0DEG
Test System:EVERFINE GO-2000A_V1 SYSTEM V2.0.406.10
Humidity:65.0%
Test Distance:11.700m [K=1.0000]
Remarks:

ZONAL FLUX DIAGRAM

ZONAL FLUX DIAGRAM:

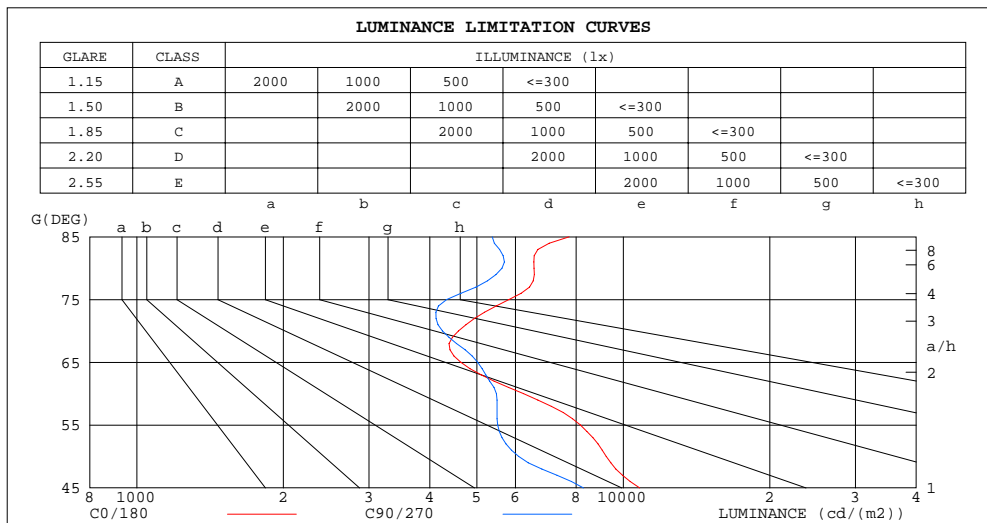
γ	C0	C90	C180	C270					γ	Φ zone	Φ total	$\%lum, lamp$
10	1014	934.2	883.3	932.8					0- 10	90.09	90.09	4.48,4.48
20	1041	880.9	803.1	882.1					10- 20	262.1	352.2	17.5,17.5
30	932.7	757.6	673.1	760.0					20- 30	390.9	743.1	36.9,36.9
40	716.9	562.5	481.0	557.1					30- 40	430.3	1173	58.3,58.3
50	419.3	277.0	305.7	286.3					40- 50	339.5	1513	75.2,75.2
60	220.7	194.0	152.0	193.9					50- 60	225.7	1739	86.4,86.4
70	110.9	102.8	94.58	113.2					60- 70	140.2	1879	93.4,93.4
80	80.54	69.19	56.59	65.72					70- 80	92.44	1971	98,98
90	16.35	6.160	1.564	8.703					80- 90	41.24	2012	100,100
100									90-100			
110									100-110			
120									110-120			
130									120-130			
140									130-140			
150									140-150			
160									150-160			
170									160-170			
180									170-180			
DEG	LUMINOUS INTENSITY:cd									UNIT:lm		

C Range: 0 - 360DEG
C Interval: 90.0DEG
Test Speed: HIGH
Temperature:25.3DEG
Operators:
Test Date:2026-01-17

γ Range: 0 - 90DEG
 γ Interval: 1.0DEG
Test System:EVERFINE GO-2000A_V1 SYSTEM V2.0.406.10
Humidity:65.0%
Test Distance:11.700m [K=1.0000]
Remarks:

LUMINANCE LIMITATION CURVES

Test:U:229.71V I:0.1760A P:39.270W PF:0.9715 Freq:49.99Hz Lamp Flux:2012.44x1 lm		
NAME:	TYPE:	WEIGHT:
SPEC.:	DIM.: 600*203*10	SERIAL No.:
MFR.:	SUR.:0.58*0.122	Shielding Angle:



LUMINANCE cd/(m2)		
G(DEG)	C0/180	C90/270
85	7734	5375
80	6555	5631
75	5817	4331
70	4583	4248
65	4635	5018
60	6237	5484
55	8161	5519
50	9219	6091
45	10807	8280

C Range: 0 - 360DEG
C Interval: 90.0DEG
Test Speed: HIGH
Temperature:25.3DEG
Operators:
Test Date:2026-01-17

γ Range: 0 - 90DEG
 γ Interval: 1.0DEG
Test System:EVERFINE GO-2000A_V1 SYSTEM V2.0.406.10
Humidity:65.0%
Test Distance:11.700m [K=1.0000]
Remarks:

```

γ Range: 0 - 90DEG
γ Interval: 1.0DEG
Test System:EVERFINE GO-2000A_V1 SYSTEM V2.0.406.10
Humidity:65.0%
Test Distance:11.700m [K=1.0000]
Remarks:

```

WEC AND CCEC

Test:U:229.71V I:0.1760A P:39.270W PF:0.9715 Freq:49.99Hz Lamp Flux:2012.44x1 lm								
NAME:			TYPE:			WEIGHT:		
SPEC.:			DIM.: 600*203*10			SERIAL No.:		
MFR.:			SUR.:0.58*0.122			Shielding Angle:		

pcc	80%			70%			50%			30%			10%			0
pw	50%	30%	10%	50%	30%	10%	50%	30%	10%	50%	30%	10%	50%	30%	10%	0
pfc	20%			20%			20%			20%			20%			0
RCR	RCR:Room Cavity Ratio						Wall Exitance Coefficients(WEC)									
0.0																
1.0	.275	.157	.050	.268	.153	.049	.255	.146	.047	.243	.140	.045	.232	.135	.043	
2.0	.258	.141	.043	.252	.139	.043	.240	.134	.041	.230	.129	.040	.220	.124	.039	
3.0	.240	.128	.038	.234	.125	.038	.224	.122	.037	.215	.118	.036	.207	.114	.035	
4.0	.223	.116	.034	.218	.114	.034	.209	.111	.033	.201	.108	.033	.194	.105	.032	
5.0	.208	.106	.031	.204	.105	.030	.196	.102	.030	.189	.100	.030	.182	.097	.029	
6.0	.194	.097	.028	.191	.096	.028	.184	.094	.027	.177	.092	.027	.171	.090	.027	
7.0	.182	.090	.026	.179	.089	.025	.173	.087	.025	.167	.086	.025	.162	.084	.025	
8.0	.171	.084	.024	.168	.083	.023	.163	.081	.023	.158	.080	.023	.153	.078	.023	
9.0	.162	.078	.022	.159	.077	.022	.154	.076	.022	.149	.075	.021	.145	.074	.021	
10.0	.153	.073	.020	.150	.073	.020	.146	.072	.020	.142	.070	.020	.138	.069	.020	

pcc	80%			70%			50%			30%			10%			0
pw	50%	30%	10%	50%	30%	10%	50%	30%	10%	50%	30%	10%	50%	30%	10%	0
pfc	20%			20%			20%			20%			20%			0
RCR	RCR:Room Cavity Ratio						Ceiling Cavity Exitance Coefficients(CCEC)									
0.0	.190	.190	.190	.163	.163	.163	.111	.111	.111	.064	.064	.064	.020	.020	.020	
1.0	.178	.156	.137	.152	.134	.118	.104	.092	.082	.060	.053	.047	.019	.017	.015	
2.0	.168	.132	.102	.144	.114	.088	.098	.079	.062	.057	.046	.036	.018	.015	.012	
3.0	.159	.114	.079	.136	.098	.068	.093	.068	.048	.054	.040	.028	.017	.013	.009	
4.0	.150	.100	.062	.129	.087	.054	.089	.060	.038	.051	.035	.023	.017	.012	.007	
5.0	.143	.090	.051	.123	.078	.044	.084	.054	.031	.049	.032	.018	.016	.010	.006	
6.0	.136	.081	.042	.117	.070	.037	.080	.049	.026	.047	.029	.015	.015	.009	.005	
7.0	.129	.074	.035	.111	.064	.031	.077	.045	.022	.045	.027	.013	.014	.009	.004	
8.0	.123	.068	.031	.106	.059	.027	.073	.042	.019	.043	.025	.011	.014	.008	.004	
9.0	.117	.063	.027	.101	.055	.023	.070	.039	.017	.041	.023	.010	.013	.007	.003	
10.0	.112	.059	.024	.097	.051	.021	.067	.036	.015	.039	.021	.009	.013	.007	.003	

C Range: 0 - 360DEG
C Interval: 90.0DEG
Test Speed: HIGH
Temperature:25.3DEG
Operators:
Test Date:2026-01-17

γ Range: 0 - 90DEG
γ Interval: 1.0DEG
Test System:EVERFINE GO-2000A_V1 SYSTEM V2.0.406.10
Humidity:65.0%
Test Distance:11.700m [K=1.0000]
Remarks:

UGR(Unified Glare Rating) Table

Test:U:229.71V I:0.1760A P:39.270W PF:0.9715 Freq:49.99Hz Lamp Flux:2012.44x1 lm											
NAME:					TYPE:			WEIGHT:			
SPEC.:					DIM.: 600*203*10			SERIAL No.:			
MFR.:					SUR.:0.58*0.122			Shielding Angle:			
ceiling/cavity	0.7	0.7	0.5	0.5	0.3	0.7	0.7	0.5	0.5	0.3	
walls	0.5	0.3	0.5	0.3	0.3	0.5	0.3	0.5	0.3	0.3	
working plane	0.2	0.2	0.2	0.2	0.2	0.2	0.2	0.2	0.2	0.2	
Room dimensions		Viewed crosswise					Viewed endwise				
x = 2H y = 2H	2H	19.5	20.9	19.8	21.1	21.3	18.5	19.9	18.8	20.1	20.3
	3H	20.1	21.4	20.4	21.6	21.8	19.4	20.6	19.7	20.9	21.1
	4H	20.7	21.9	21.0	22.1	22.4	19.8	21.0	20.1	21.3	21.5
	6H	21.4	22.5	21.7	22.8	23.0	20.5	21.6	20.8	21.8	22.1
	8H	21.7	22.7	22.0	23.0	23.3	20.7	21.8	21.1	22.1	22.4
	12H	21.9	22.9	22.2	23.2	23.5	20.9	22.0	21.3	22.2	22.5
4H	2H	19.7	20.9	20.0	21.1	21.4	18.9	20.1	19.2	20.3	20.6
	3H	20.6	21.6	20.9	21.9	22.2	20.0	21.0	20.3	21.3	21.6
	4H	21.3	22.3	21.7	22.6	22.9	20.6	21.5	21.0	21.9	22.2
	6H	22.3	23.1	22.7	23.5	23.8	21.5	22.3	21.8	22.6	23.0
	8H	22.6	23.4	23.0	23.8	24.2	21.8	22.6	22.2	23.0	23.4
	12H	23.0	23.7	23.4	24.1	24.5	22.1	22.8	22.5	23.2	23.6
8H	4H	21.6	22.4	22.0	22.8	23.1	20.9	21.7	21.4	22.1	22.5
	6H	22.8	23.4	23.2	23.8	24.2	22.1	22.7	22.5	23.1	23.5
	8H	23.2	23.8	23.7	24.3	24.7	22.5	23.1	23.0	23.5	24.0
	12H	23.7	24.2	24.2	24.7	25.2	22.9	23.4	23.4	23.9	24.3
12H	4H	21.6	22.4	22.1	22.7	23.1	21.0	21.7	21.4	22.1	22.5
	6H	22.9	23.4	23.3	23.9	24.3	22.2	22.8	22.6	23.2	23.6
	8H	23.4	23.9	23.9	24.4	24.8	22.7	23.2	23.2	23.7	24.2
Variations with the observer position at spacings:											
S = 1.0H	+ 0.3 / - 0.3					+ 0.4 / - 0.4					
1.5H	+ 0.1 / - 0.4					+ 0.3 / - 0.5					
2.0H	+ 0.5 / - 0.5					+ 0.4 / - 0.3					

CIE Pub.117, 2012 lm Total Lamp Luminous Flux Corrected ($8\log(F/F_0) = 2.4$)

C Range: 0 - 360DEG
C Interval: 90.0DEG
Test Speed: HIGH
Temperature:25.3DEG
Operators:
Test Date:2026-01-17

γ Range: 0 - 90DEG
 γ Interval: 1.0DEG
Test System:EVERFINE GO-2000A_V1 SYSTEM V2.0.406.10
Humidity:65.0%
Test Distance:11.700m [K=1.0000]
Remarks:

UTILIZATION FACTORS TABLE

Test:U:229.71V I:0.1760A P:39.270W PF:0.9715 Freq:49.99Hz Lamp Flux:2012.44x1 lm		
NAME:	TYPE:	WEIGHT:
SPEC.:	DIM.: 600*203*10	SERIAL No.:
MFR.:	SUR.:0.58*0.122	Shielding Angle:

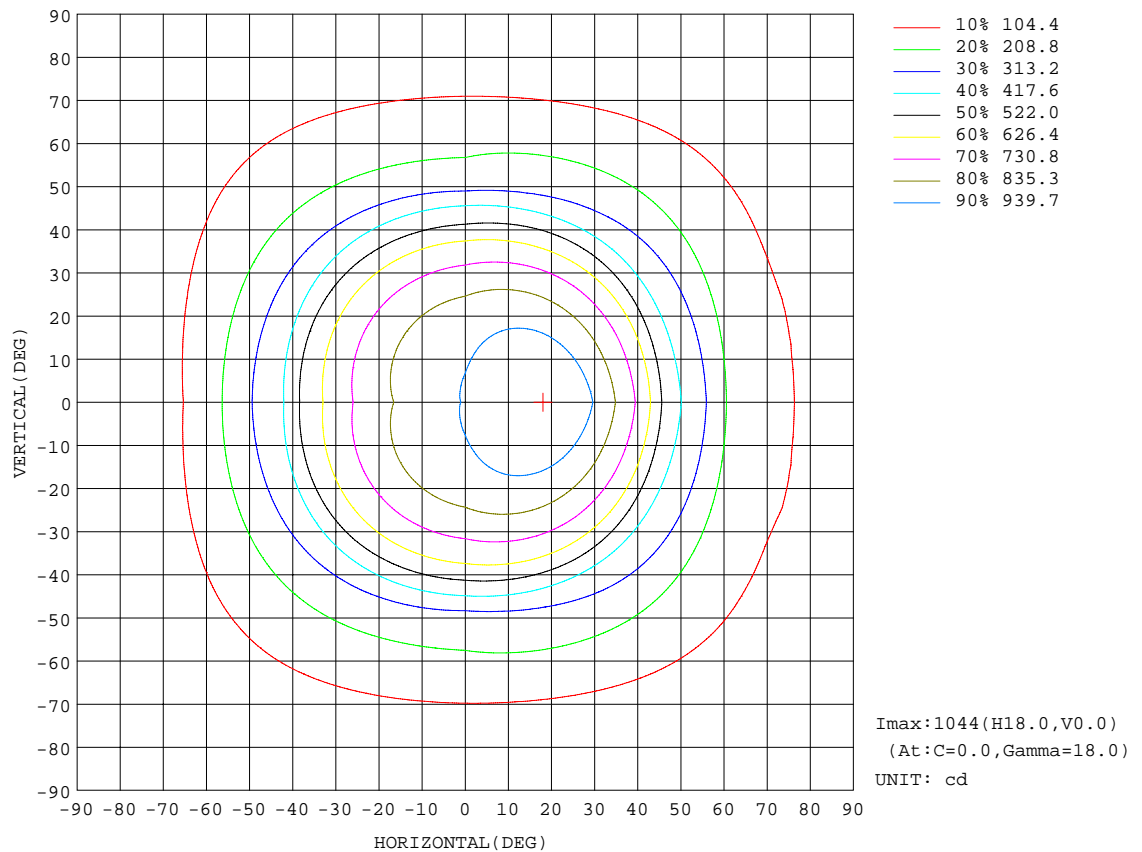
REFLECTANCE										
Ceiling	0.8	0.8	0.8	0.7	0.7	0.7	0.5	0.5	0.5	0
Walls	0.7	0.5	0.3	0.7	0.5	0.3	0.7	0.5	0.3	0
Working plane	0.2	0.2	0.2	0.2	0.2	0.2	0.2	0.2	0.2	0
ROOM INDEX	UTILIZATION FACTORS(PERCENT) $k(RI) \times RCR = 5$									
$k = 0.60$	66	55	49	65	55	49	64	55	49	43
0.80	75	65	59	74	65	59	73	64	58	52
1.00	83	73	67	82	73	67	80	74	66	60
1.25	89	80	74	88	80	74	85	78	73	67
1.50	93	85	79	92	84	79	89	83	78	71
2.00	99	92	86	97	91	86	94	89	84	77
2.50	102	96	90	100	94	90	97	92	88	80
3.00	105	99	94	103	98	93	99	95	91	83
4.00	108	103	99	106	102	98	102	98	95	87
5.00	110	106	103	108	104	101	104	101	98	89
ROOM INDEX	UF(total)									Direct
According to DIN EN 13032-2 2004			Suspended					SHRNOM = 1.25		

C Range: 0 - 360DEG
C Interval: 90.0DEG
Test Speed: HIGH
Temperature:25.3DEG
Operators:
Test Date:2026-01-17

γ Range: 0 - 90DEG
 γ Interval: 1.0DEG
Test System:EVERFINE GO-2000A_V1 SYSTEM V2.0.406.10
Humidity:65.0%
Test Distance:11.700m [K=1.0000]
Remarks:

ISOCANDELA DIAGRAM

Test:U:229.71V I:0.1760A P:39.270W PF:0.9715 Freq:49.99Hz Lamp Flux:2012.44x1 lm		
NAME:	TYPE:	WEIGHT:
SPEC.:	DIM.: 600*203*10	SERIAL No.:
MFR.:	SUR.:0.58*0.122	Shielding Angle:

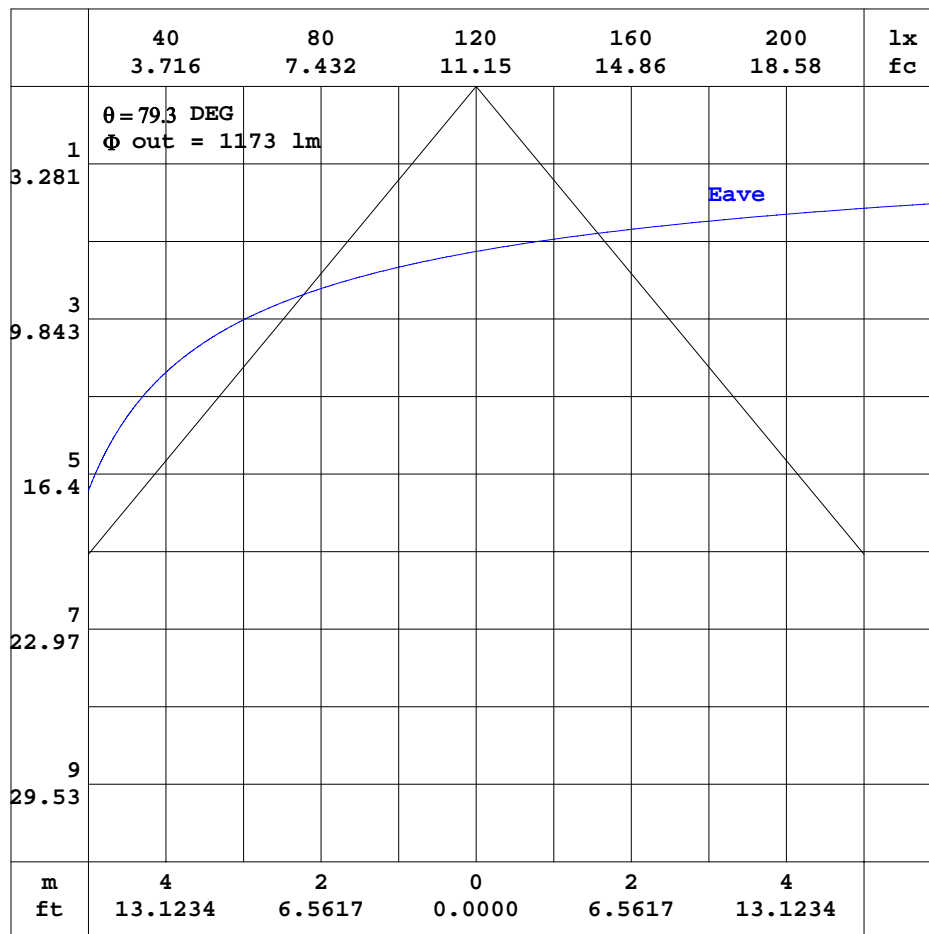


C Range: 0 - 360DEG
C Interval: 90.0DEG
Test Speed: HIGH
Temperature:25.3DEG
Operators:
Test Date:2026-01-17

γ Range: 0 - 90DEG
 γ Interval: 1.0DEG
Test System:EVERFINE GO-2000A_V1 SYSTEM V2.0.406.10
Humidity:65.0%
Test Distance:11.700m [K=1.0000]
Remarks:

AAI CURVES

Test:U:229.71V I:0.1760A P:39.270W PF:0.9715 Freq:49.99Hz Lamp Flux:2012.44x1 lm		
NAME:	TYPE:	WEIGHT:
SPEC.:	DIM.: 600*203*10	SERIAL No.:
MFR.:	SUR.:0.58*0.122	Shielding Angle:



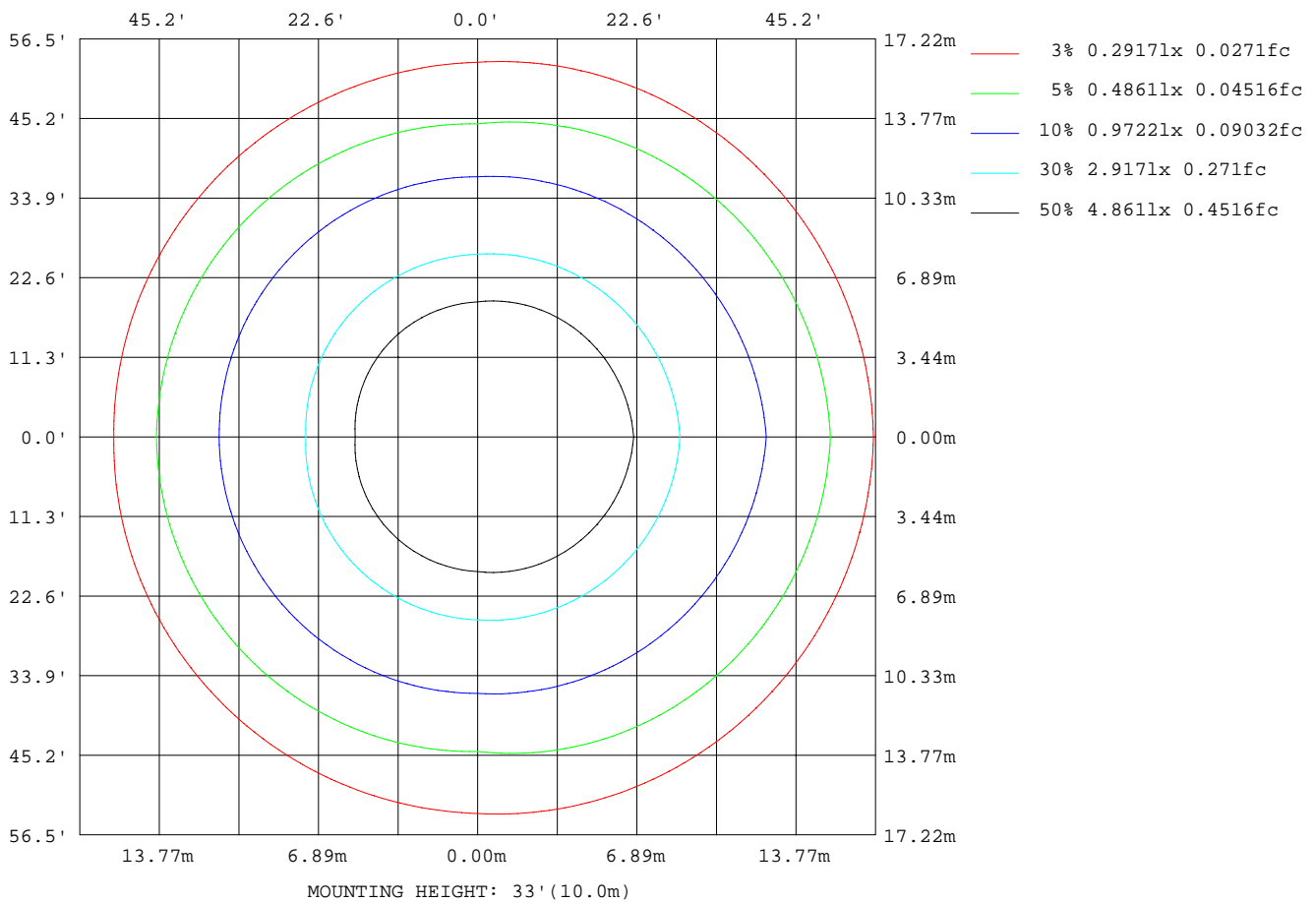
Note: The Curves indicate the illuminated area and the average illumination when the luminaire is at different distance.

C Range: 0 - 360DEG
 C Interval: 90.0DEG
 Test Speed: HIGH
 Temperature: 25.3DEG
 Operators:
 Test Date: 2026-01-17

γ Range: 0 - 90DEG
 γ Interval: 1.0DEG
 Test System: EVERFINE GO-2000A_V1 SYSTEM V2.0.406.10
 Humidity: 65.0%
 Test Distance: 11.700m [K=1.0000]
 Remarks:

ISOLUX DIAGRAM

Test:U:229.71V I:0.1760A P:39.270W PF:0.9715 Freq:49.99Hz Lamp Flux:2012.44x1 lm		
NAME:	TYPE:	WEIGHT:
SPEC.:	DIM.: 600*203*10	SERIAL No.:
MFR.:	SUR.:0.58*0.122	Shielding Angle:



C Range: 0 - 360DEG
C Interval: 90.0DEG
Test Speed: HIGH
Temperature: 25.3DEG
Operators:
Test Date: 2026-01-17

γ Range: 0 - 90DEG
 γ Interval: 1.0DEG
Test System: EVERFINE GO-2000A_V1 SYSTEM V2.0.406.10
Humidity: 65.0%
Test Distance: 11.700m [K=1.0000]
Remarks:

LED Avg.L Report

Test:U:229.71V I:0.1760A P:39.270W PF:0.9715 Freq:49.99Hz Lamp Flux:2012.44x1 lm		
NAME:	TYPE:	WEIGHT:
SPEC.:	DIM.: 600*203*10	SERIAL No.:
MFR.:	SUR.:0.58*0.122	Shielding Angle:

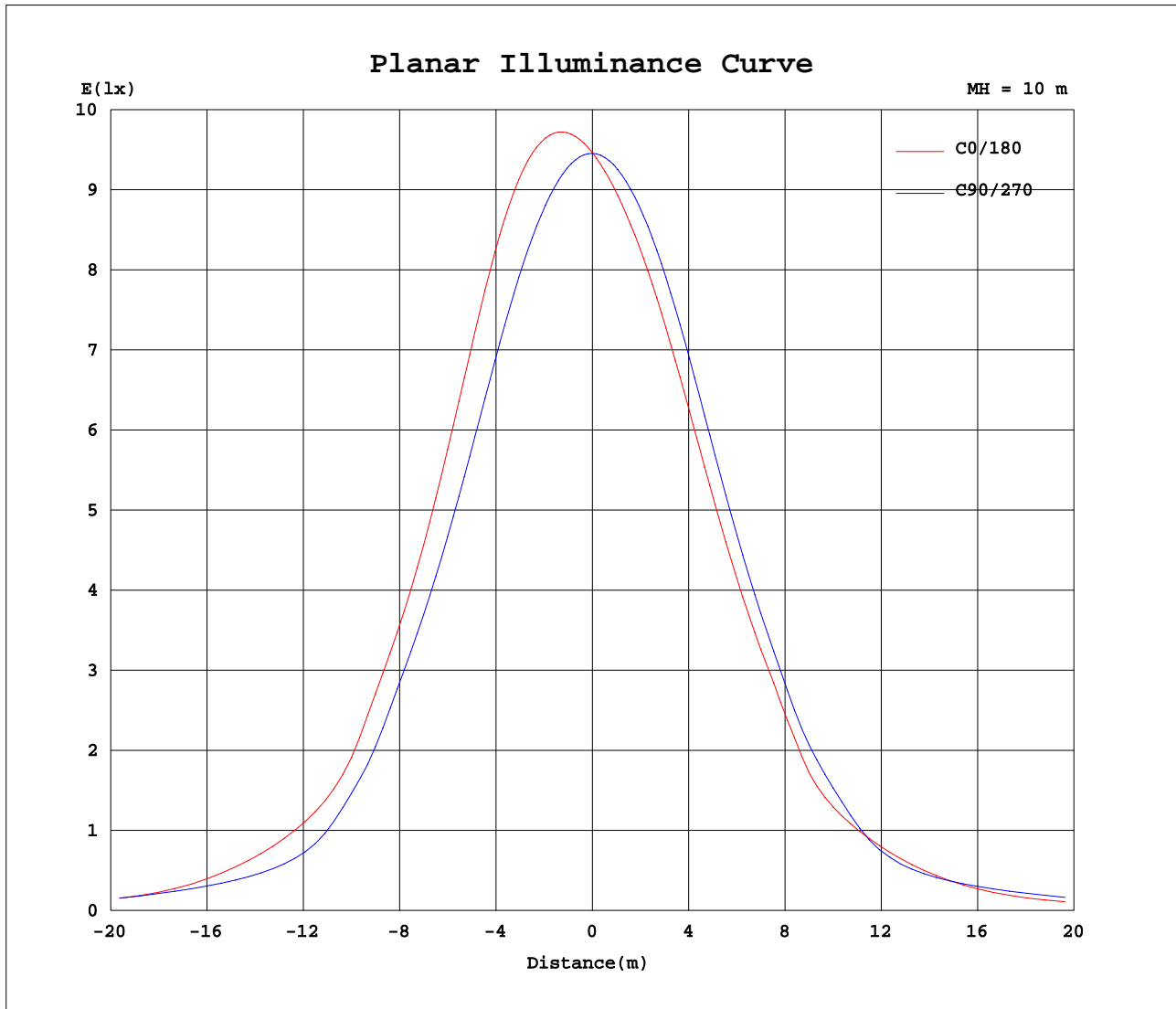
AvgL	cd/m2
L_0~180(65)av	4088
L_0~180(75)av	5266
L_0~180(85)av	6399
L_90~270(65)av	5209
L_90~270(75)av	4288
L_90~270(85)av	5794
L_45(65)av	4755
L_45(75)av	4620
L_45(85)av	5938

Standard: GB/T 29293-2012

C Range: 0 - 360DEG
C Interval: 90.0DEG
Test Speed: HIGH
Temperature:25.3DEG
Operators:
Test Date:2026-01-17

γ Range: 0 - 90DEG
γ Interval: 1.0DEG
Test System:EVERFINE GO-2000A_V1 SYSTEM V2.0.406.10
Humidity:65.0%
Test Distance:11.700m [K=1.0000]
Remarks:

Planar Illuminance Curve



C Range: 0 - 360DEG
C Interval: 90.0DEG
Test Speed: HIGH
Temperature: 25.3DEG
Operators:
Test Date: 2026-01-17

γ Range: 0 - 90DEG
 γ Interval: 1.0DEG
Test System: EVERFINE GO-2000A_V1 SYSTEM V2.0.406.10
Humidity: 65.0%
Test Distance: 11.700m [K=1.0000]
Remarks:

```

γ Range: 0 - 90DEG
γ Interval: 1.0DEG
Test System:EVERFINE GO-2000A_V1 SYSTEM V2.0.406.10
Humidity:65.0%
Test Distance:11.700m [K=1.0000]
Remarks:

```